

**Anti-CLDN6 Reference Antibody (IMAB027)**  
**Recombinant Antibody**  
**Catalog # APR10143****Specification**

---

**Anti-CLDN6 Reference Antibody (IMAB027) - Product Information**

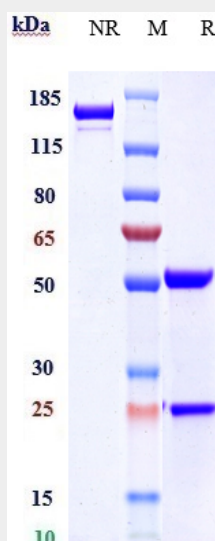
Application	FC, Kinetics, Animal Model
Primary Accession	<a href="#">P56747</a>
Reactivity	Human
Clonality	Monoclonal
Isotype	IgG1
Calculated MW	144.42 KDa

**Anti-CLDN6 Reference Antibody (IMAB027) - Additional Information****Target/Specificity**  
CLDN6**Endotoxin**  
< 0.001EU/ µg,determined by LAL method.**Conjugation**  
Unconjugated**Expression system**  
CHO Cell**Format**  
Purified monoclonal antibody supplied in PBS, pH6.0, without preservative.This antibody is purified through a protein A column.**Anti-CLDN6 Reference Antibody (IMAB027) - Protein Information****Name** CLDN6**Function**  
Plays a major role in tight junction-specific obliteration of the intercellular space.**Cellular Location**  
Cell junction, tight junction {ECO:0000250|UniProtKB:Q9Z262}. Cell membrane; Multi-pass membrane protein**Tissue Location**  
Expressed in the liver, in peripheral blood mononuclear cells and hepatocarcinoma cell lines**Anti-CLDN6 Reference Antibody (IMAB027) - Protocols**

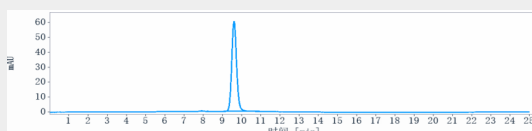
Provided below are standard protocols that you may find useful for product applications.

- [Western Blot](#)
- [Blocking Peptides](#)
- [Dot Blot](#)
- [Immunohistochemistry](#)
- [Immunofluorescence](#)
- [Immunoprecipitation](#)
- [Flow Cytometry](#)
- [Cell Culture](#)

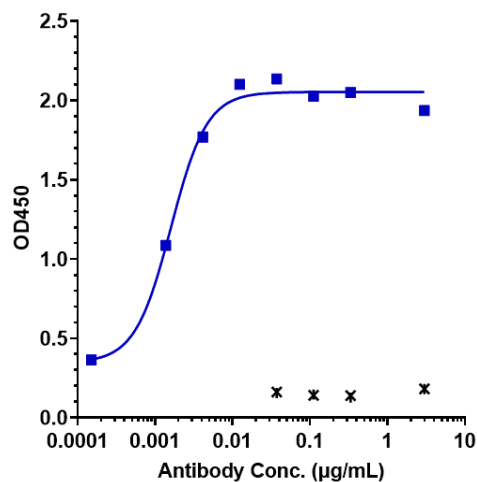
#### Anti-CLDN6 Reference Antibody (IMAB027) - Images



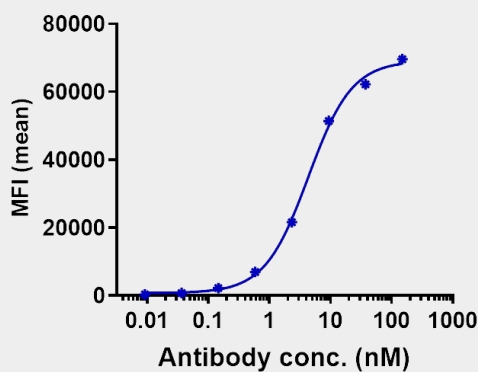
Anti-CLDN6 Reference Antibody (IMAB027) on SDS-PAGE under reducing (R) condition. The gel was stained with Coomassie Blue. The purity of the protein is greater than 95%



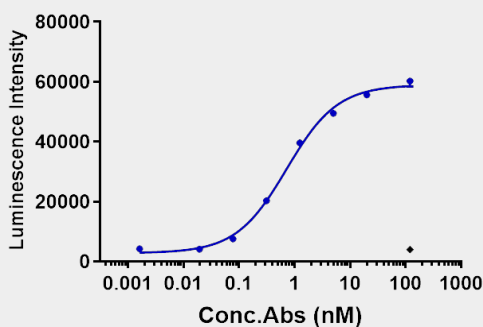
The purity of Anti-CLDN6 Reference Antibody (IMAB027) is more than 98.41% ,determined by SEC-HPLC.



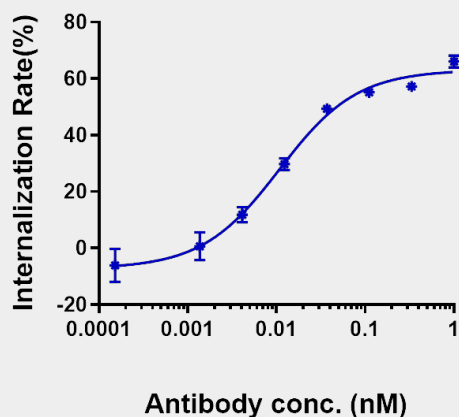
Immobilized human CLDN6 VLP at 8 µg/mL can bind Anti-CLDN6 Reference Antibody (IMAB027)  $EC_{50}=0.001599$  µg/mL



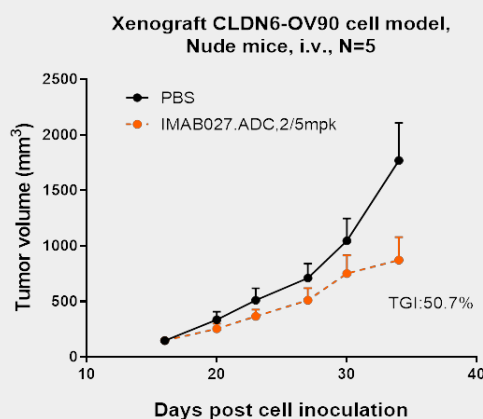
Human CLDN6 CHO cells were stained with Anti-CLDN6 Reference Antibody (IMAB027) and negative control protein respectively, washed and then followed by PE and analyzed with FACS,  $EC_{199}=4.342$  nM



Anti-CLDN6 Reference Antibody (IMAB027)-induced ADCC activity was evaluated using Human CD16a (158V) (Luc) Jurkat Reporter Cell. The max induction fold was approximately 14.16



Anti-CLDN6 Reference Antibody (IMAB027) by huCLDN6-HEK293 increased with the increase of antibody concentration, and the Internalization Rate (%) reached 60% at antibody concentration of 1 nM.



IMAB027 inhibited the tumor growth of OV90 on Balb/c nude mice. The result showed significant anti-tumor effects, with an tumor inhibition rate (TGI) of 50.7% at 5 mpk at D34.